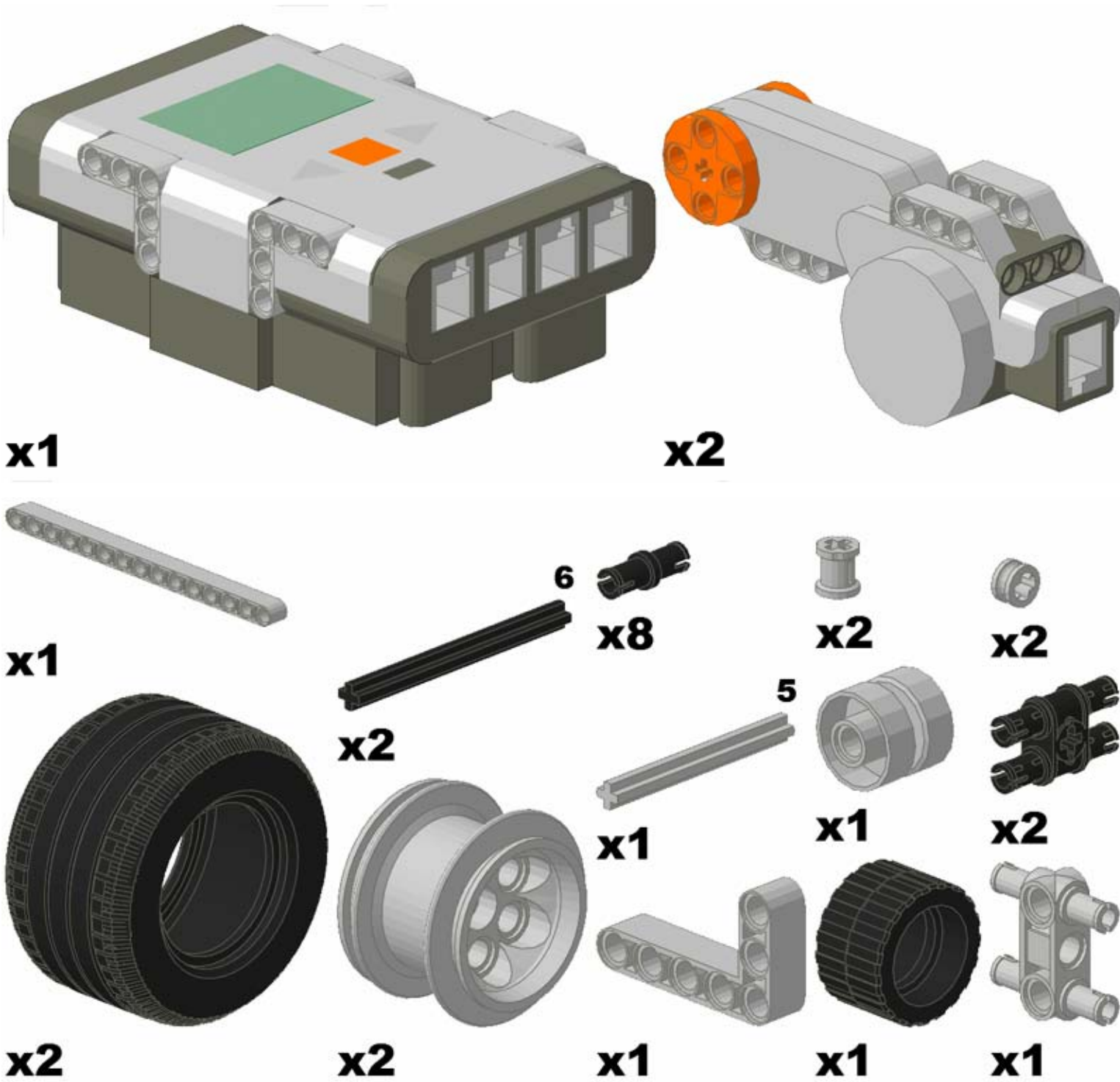
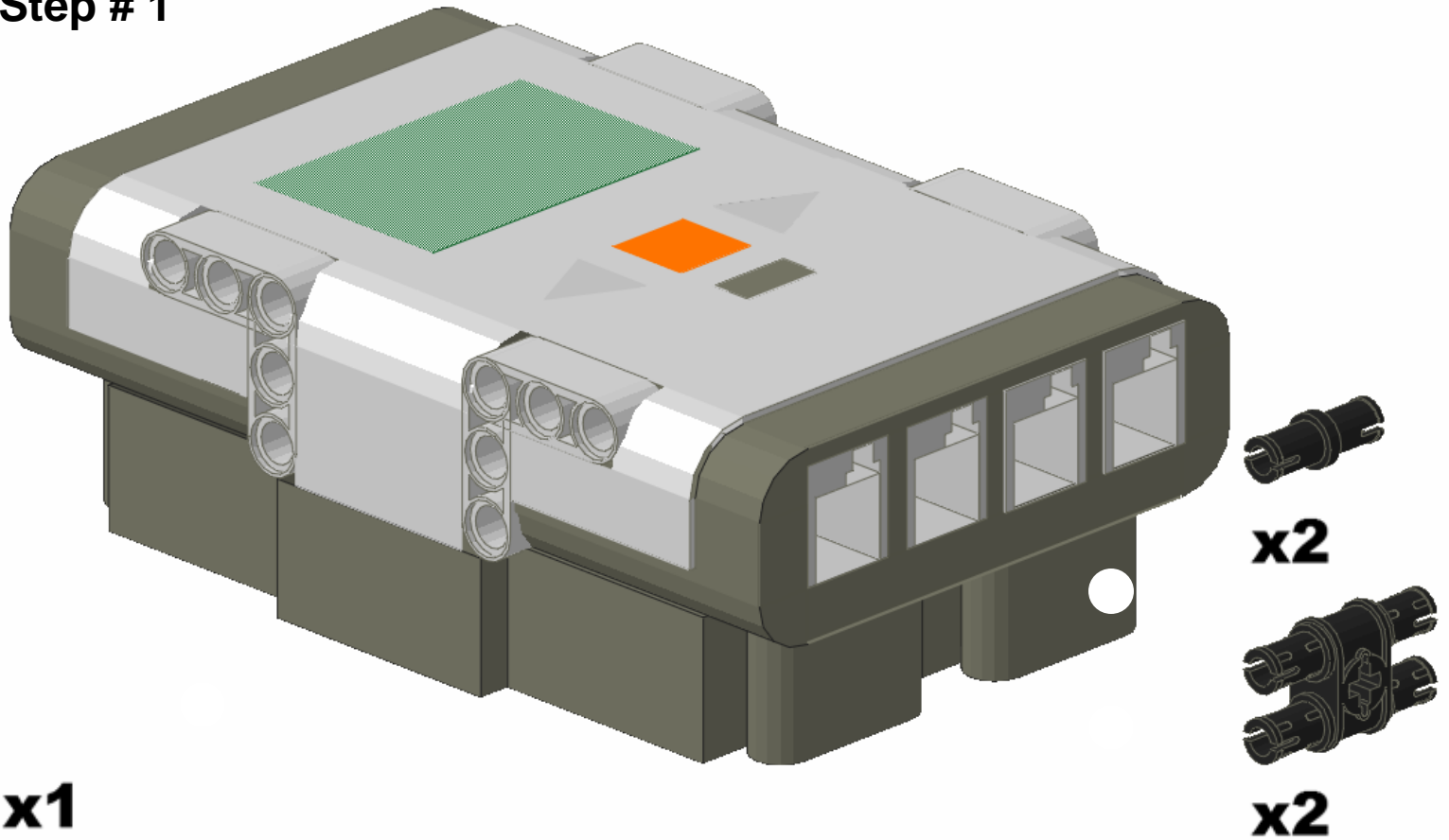


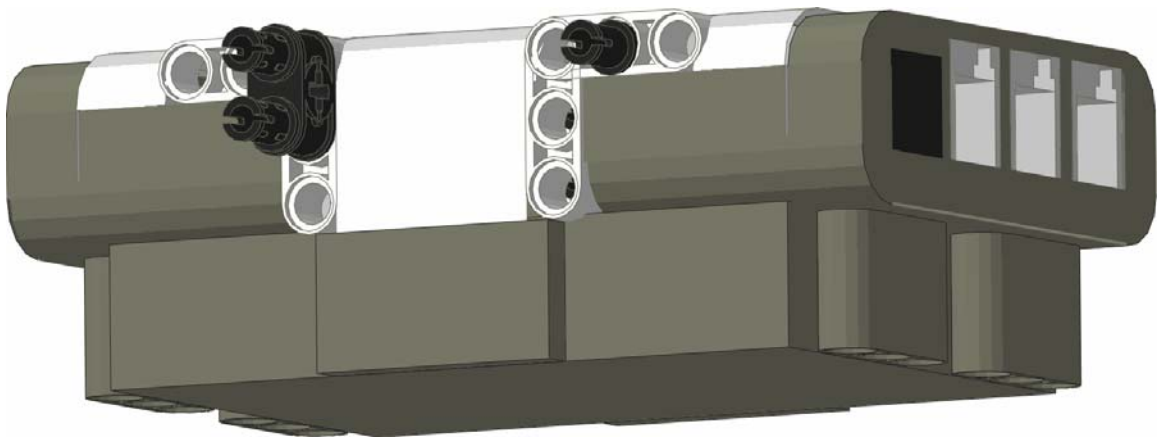
These are the parts you will need for the car.



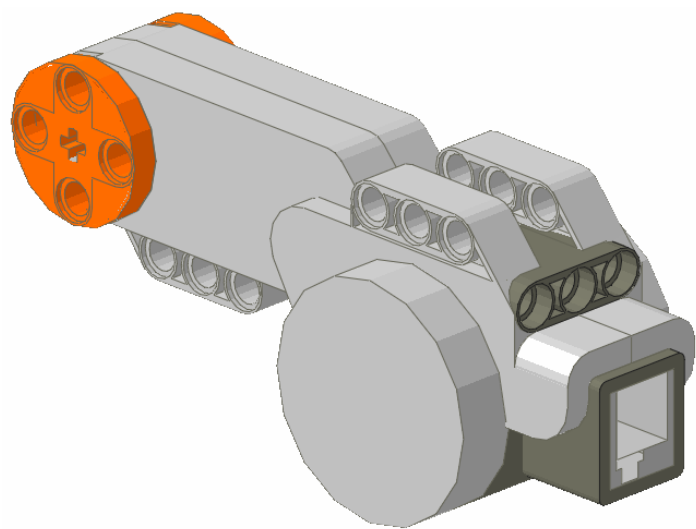
Step # 1



Attach the connect four pieces and the friction pin into the NXT as shown.

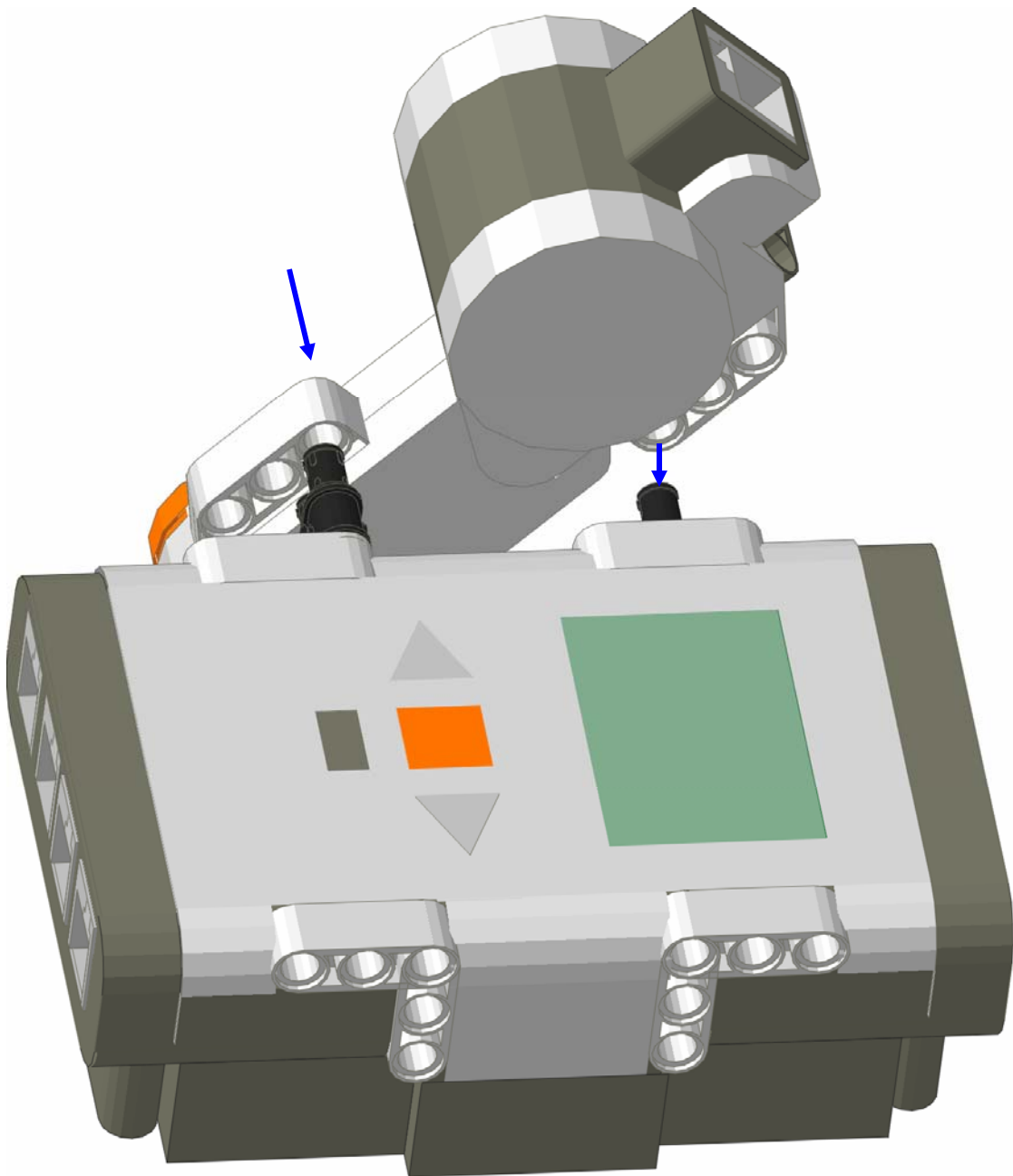


Step # 2

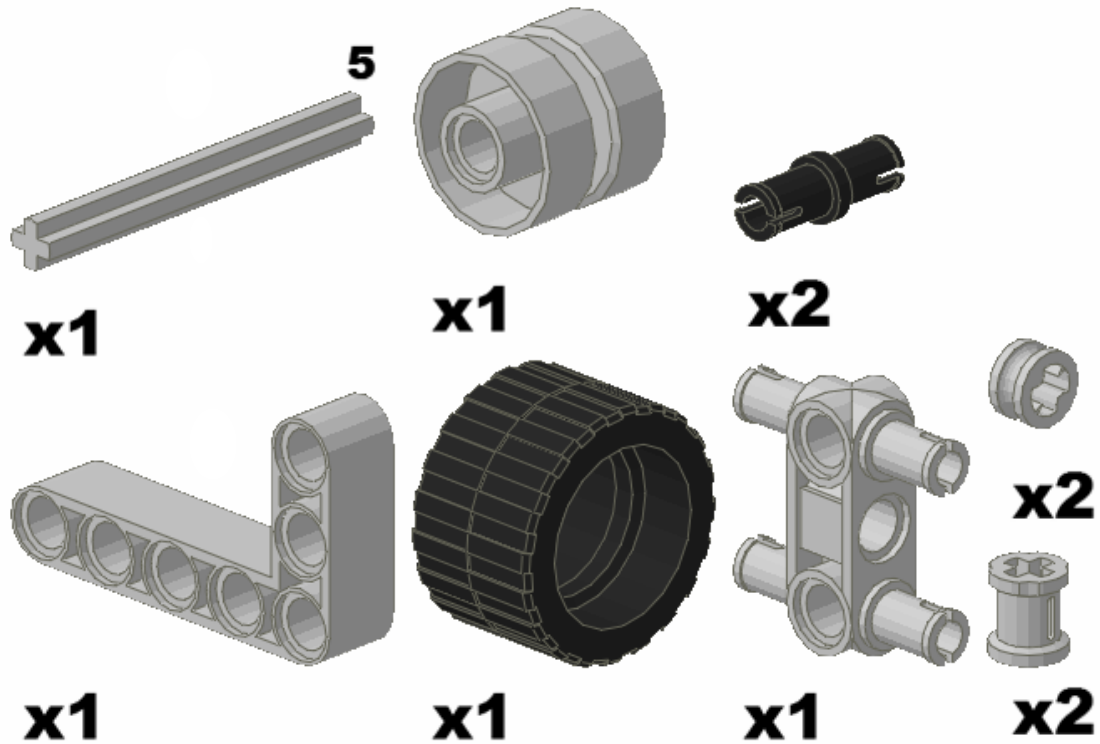


x2

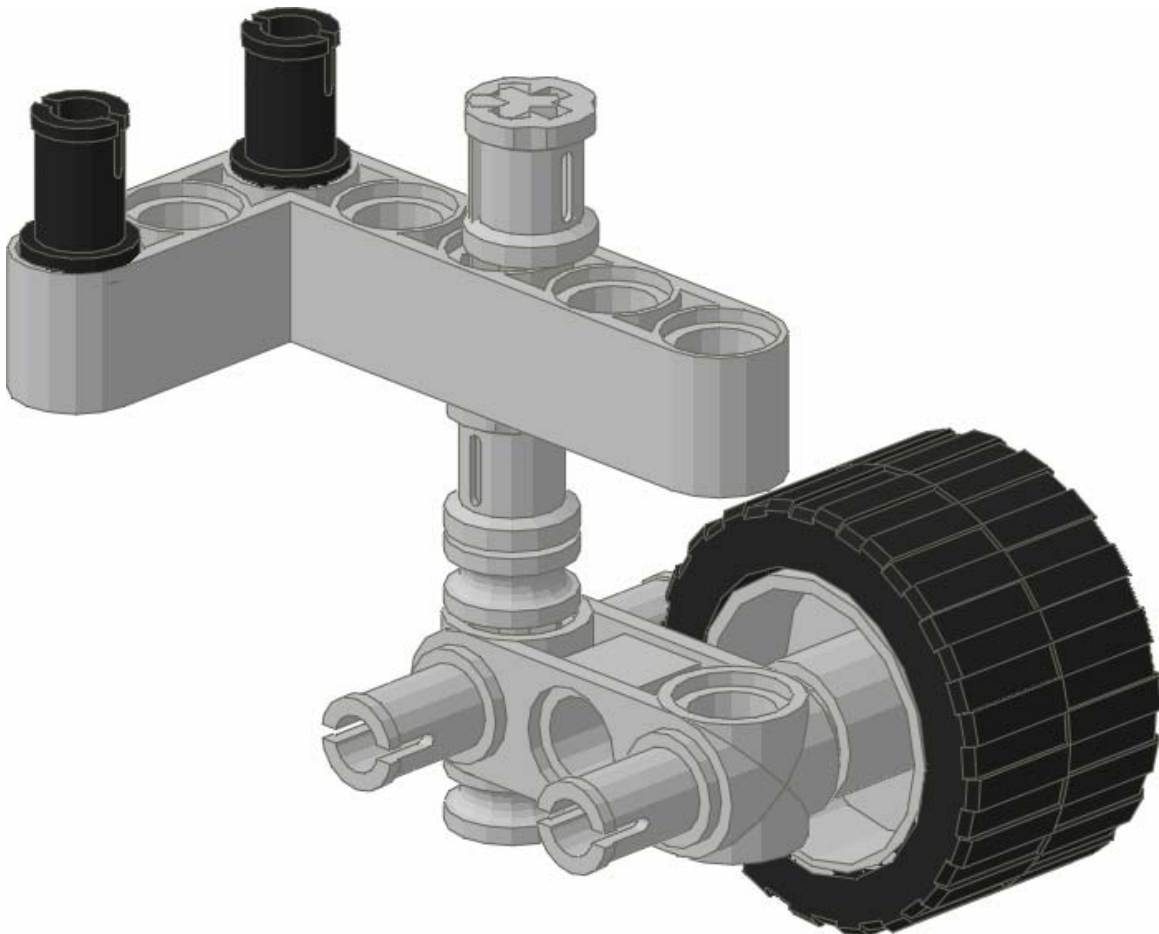
Attach the Motors to the connect four piece and friction pin as shown.



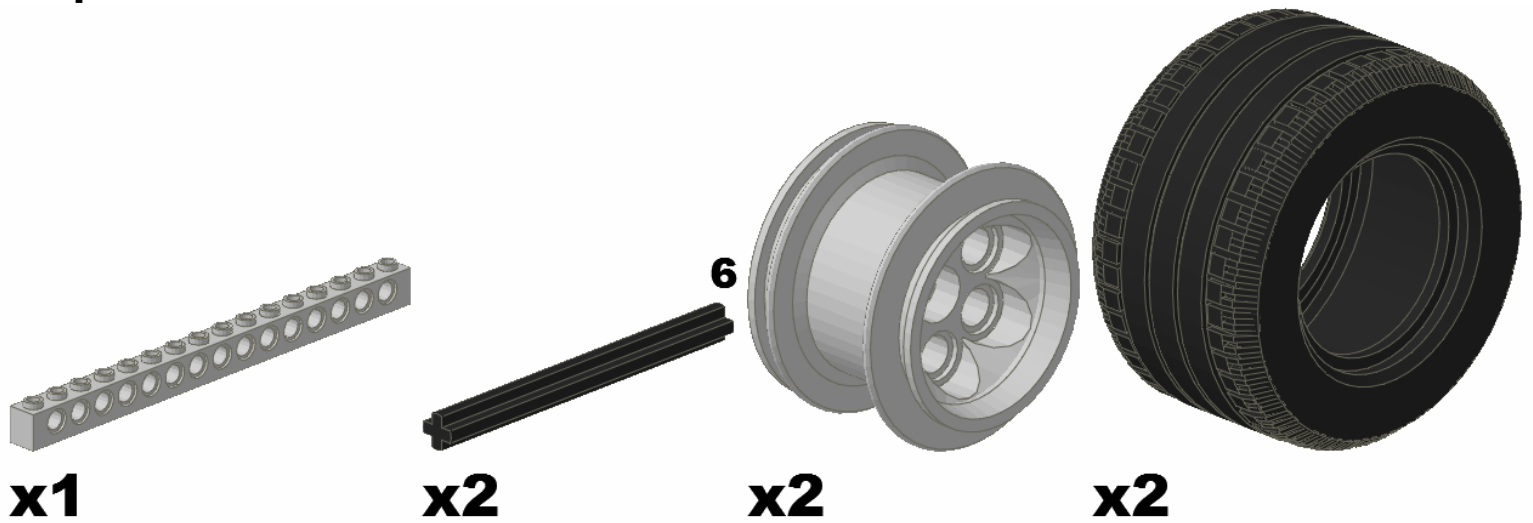
Step # 3



Insert the five stud axle into the technic piece as shown. Brace it with a bushing on either side. Below the bushing, put a half bushing, then the connect four space piece and then another half bushing. Attach the wheel and place two friction pins into the technic piece as shown.



Step # 4



Attach the wheels and the tires with the six stud axles. Clip on the wheel assembly as shown. Place pins into the ends and two holes in from the ends of the 15 stud beam and place it across the motors as shown.

