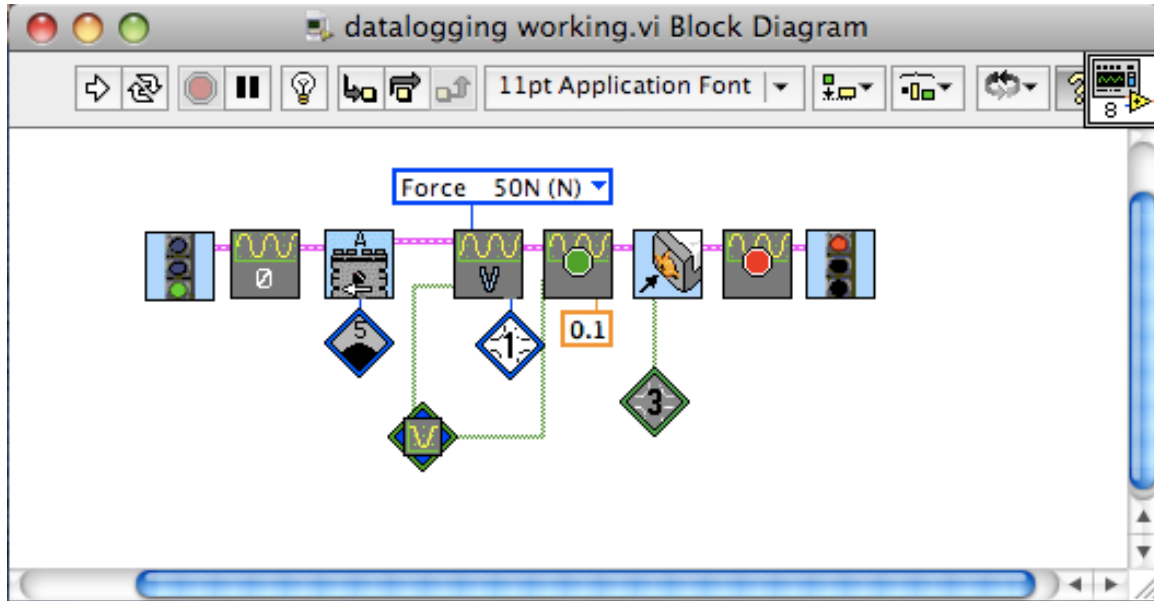


Tensile Load Tester Programming & Data Logging Instructions

Step 1: Using Robolab's Inventer 4 interface, generate the following block diagram.

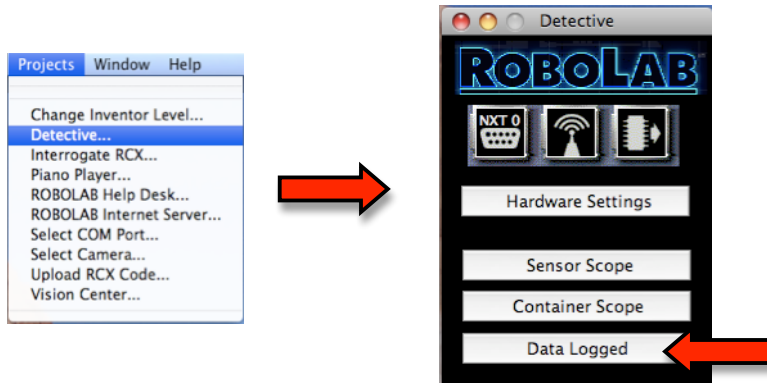


Note: The Vernier Datalogging Blocks can be found using the following path:

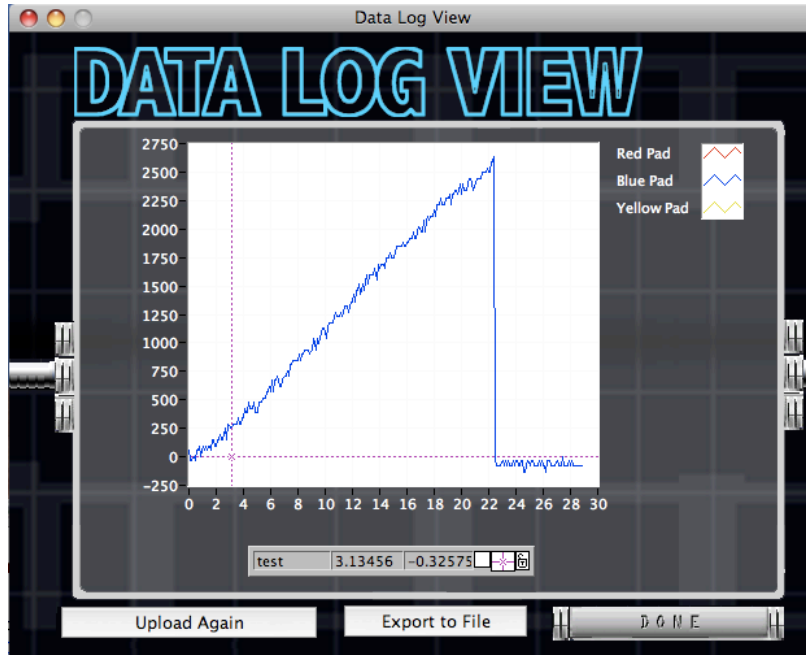


Step 2: Ready your robot and Run the program program. When the material fails or you want to stop the data logging, press the touch sensor attached to port 3

Step 3: Upload your data from the Detective Interface by choosing the "Data Logged" option.



Step 4: Your data should upload automatically. You should see the data points plotted as Force VS. Time.



Note: It is very easy to surpass the range of the force sensor, if your data has a flat maximum, such as the data shown below, try using a smaller sample or one that will fail more easily

